

D4-E

Gear Pump Hot Melt Unit

The D4-e Unit is ideally suited for a range of packaging, paper converting, graphic arts, non-wovens, and product assembly industries. Specific applications include spray, ribbon coating, direct contact and high-speed jetting adhesive dispensing guns.

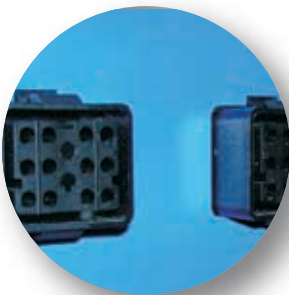
- The D4-e uses a large, reliable 1/4 horsepower motor.
- Large capacity gear pump delivers 60 lbs/hour
- Teflon® coated tanks reduce char buildup for easy maintenance and reliable operation
- Independent, redundant over-temperature circuits and system over-pressure protection provide safe operation
- 100% compatibility with industry standard hoses and guns
- Independent control of each heated zone (up to 5) minimizes adhesive degradation and permits precise uniform patterns
- Compliance with major approval codes worldwide

Solid-state controls, precise RTD temperature sensors, and thermostatic temperature control optimize system performance

Teflon® coated tanks



Outlets for two hoses and guns allows for user flexibility

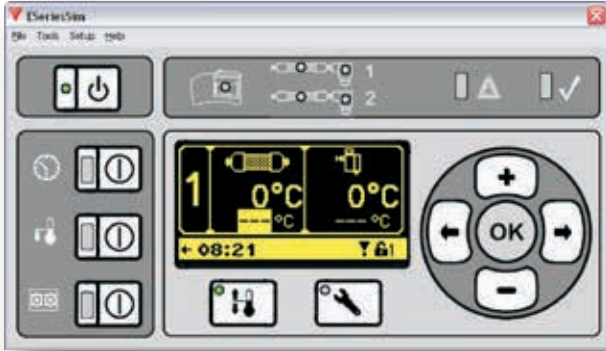


Positive displacement, motor-driven gear pump offers a continuous pulse free output.



D4-e units feature one mechanical relief valve or optional pneumatic relief valve.





D4-e Units feature easy-to-use touchpads with bright LCD screens to allow operators to quickly setup system parameters and monitor system operation without the need to learn any confusing codes.

D4-e System touchpad PID controller features:

- graphical display/interface
- programmable sequential zone start-up
- automatic temperature setback
- high/low temperature protection
- Fahrenheit or Celsius option
- system diagnostics
- seven-day programmable clock
- two user selectable inputs and one selectable output
- password protection for setup configuration

Technical Specifications

D4-e Characteristics	
Tank Capacity:	4.0 kg
Melt Rate:	5.0 kg/hr (11.1 lbs/hr)
Motor:	1/4 HP Fixed Speed AC
Pump Rate:	27 kg/hr (60 lb/hr)
Temp. Range:	30-230°C
Temp. Stability	0.5°C
Electrical:	110/120 VAC or 200/240 VAC 20 AMP single phase with ground
Weight: (empty)	34.0 kg (75.0 lbs)
Dimensions (WxHxD):	312 mm x 424 mm x 607 mm (12.3 in x 16.7 in x 23.9 in)
Gun Attachments:	2



For more information, visit valcomelton.com or contact your local Valco Melton representative.

World Headquarters: USA, Cincinnati, Ohio (Corporate Offices) • Tel:+1.513.874.6550 • Fax: +1.513.874.3612

Europe Headquarters: Spain, Navarra • Tel:+34.948.321.580 • Fax:+34.948.326.584

Asia Headquarters: China, Xiamen, Fujian • Tel:+86.592.591.7854 • Fax:+86.592.591.7834

info@valcomelton.com • Serving over 76 Countries Worldwide • valcomelton.com