



MCP-4P

Adhesive System Pattern Control

The Valco Melton MCP-4P is a full-featured adhesive system pattern control with exceptional value, ideal for the packaging industry. The MCP-4P is suited for packaging applications including palletizing, case & carton sealing and erection, graphic arts, or any variable speed requirements.

- Mounts vertically
- Up to 4 trigger inputs
- Simple installation using 24 VDC power supply from PLC or electrical cabinet
- 4-channel inputs capable of multiple glue patterns
- Low-speed version with field wireable connectors
- High-speed version with M12 plug-in connectors
- Timer or Encoder functions
- Optional integral line speed/glue pressure control
- Multi valve, complex glue patterns
- Job storage
- Stores 4 trigger inputs to maximize productivity of existing valve/trigger layouts

MCP-4P Added Features:

- DIN-rail mountable inside electrical cabinet
- Second programmable 0-10 V line speed output
- Available integrated 100-130/200-240 VAC 50/60Hz power supply

Available in Two Versions:



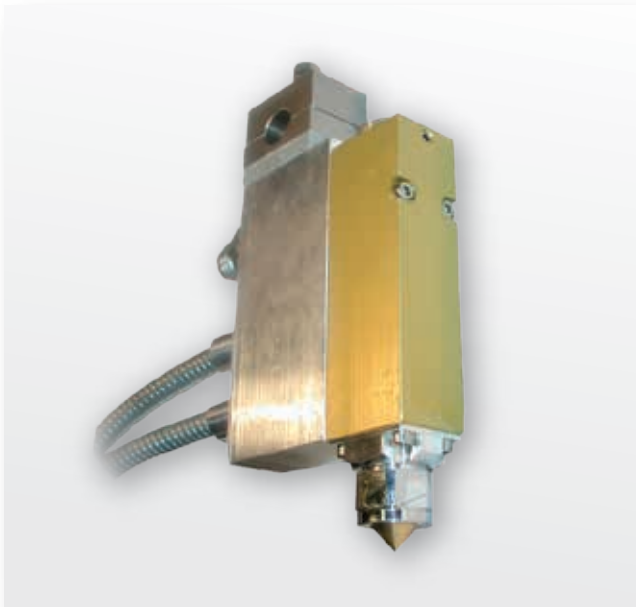
Version
074xx041

- Input voltage 24 VDC
- Dimensions: 106mm deep x 282 mm wide x 245 mm high
- Remote 100-240 VAC, 50/60 Hz power supply optional
- Field-wireable connections
- External EPC
- Will operate 12/24 VDC pneumatic valves



Version
074xx040

- Input voltage 100-130/200-240 VAC, 50/60 Hz, field selectable
- Dimensions: 168mm deep x 285 mm wide x 245 mm high (with power supply)
- M12 connectors
- Pre-configured to act as a valve driver
- External EPC (Electronic Pressure Control)



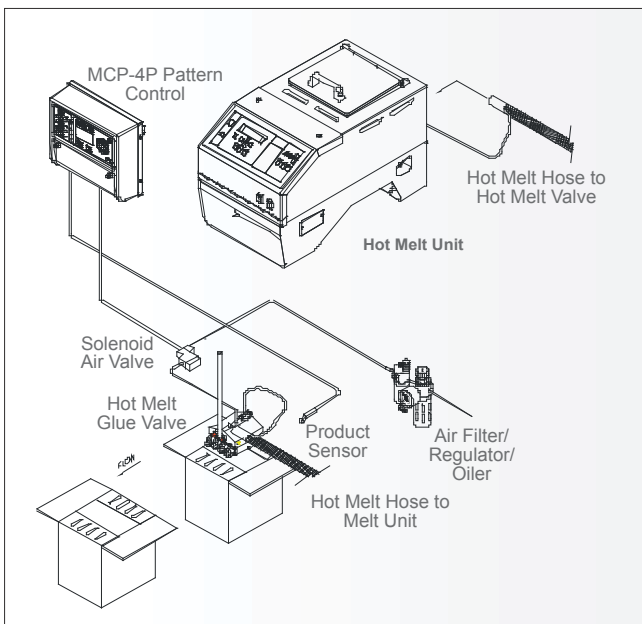
THE TOTAL PACKAGE

Valco Melton's range of application products offer a complete selection of hot melt components and support equipment:

- RTD hot melt hoses
- Manual and automatic dispensing valves
- Nozzle and applicator styles
- Mounting bracket packages
- Solid-state pattern control systems
- In-line filters
- Replacement parts for competitive systems
- High-performance hot melt adhesives

The MCP-4C and MCP-4P controls can be used with an extensive selection of Valco's cold glue or hot melt adhesive dispensing valves including high-speed, non-contact spot gluing, fine-line gluing, and ribbon-pattern gluing. Suited for applications such as folding carton production, envelope manufacturing, paper-folders, book and magazine production, bag-making, corrugated box-making, and other high speed converting requirements

Typical MCP-4P System and Technical Specifications



MCP-4P Specifications

Glue Pressure Outputs	2
Input Voltage	100-130/200-240 VAC, 50/60 Hz, Field selectable
Number of Independent Output Channels	4
Number of Trigger Inputs	4
Maximum Product Length	200 inches (5000 mm)
Glue Pattern Resolution	0.01 inch (1 mm)
Glue Pattern Accuracy	1 mm at 610 m/min
Modes	Timer, Encoder
Maximum Number of Patterns per Channel	8
Gluing Modes	Continuous, stitch, jog, and intermittent
Enclosure Rating	IP 54



For more information, visit valcomelton.com or contact your local Valco Melton representative.

World Headquarters: USA, Cincinnati, Ohio (Corporate Offices) • Tel:+1.513.874.6550 • Fax: +1.513.874.3612

Europe Headquarters: Spain, Navarra • Tel:+34.948.321.580 • Fax:+34.948.326.584

Asia Headquarters: China, Xiamen, Fujian • Tel:+86.592.591.7854 • Fax:+86.592.591.7834

info@valcomelton.com • Serving over 76 Countries Worldwide • valcomelton.com