



CLEARVISION THE PERFECT CARTON™

QUALITY VISIBLE



World Headquarters

USA, OH, Cincinnati | Tel: +1.513.874.6550
info@valcomelton.com

America Manufacturing, Sales & Service Centers

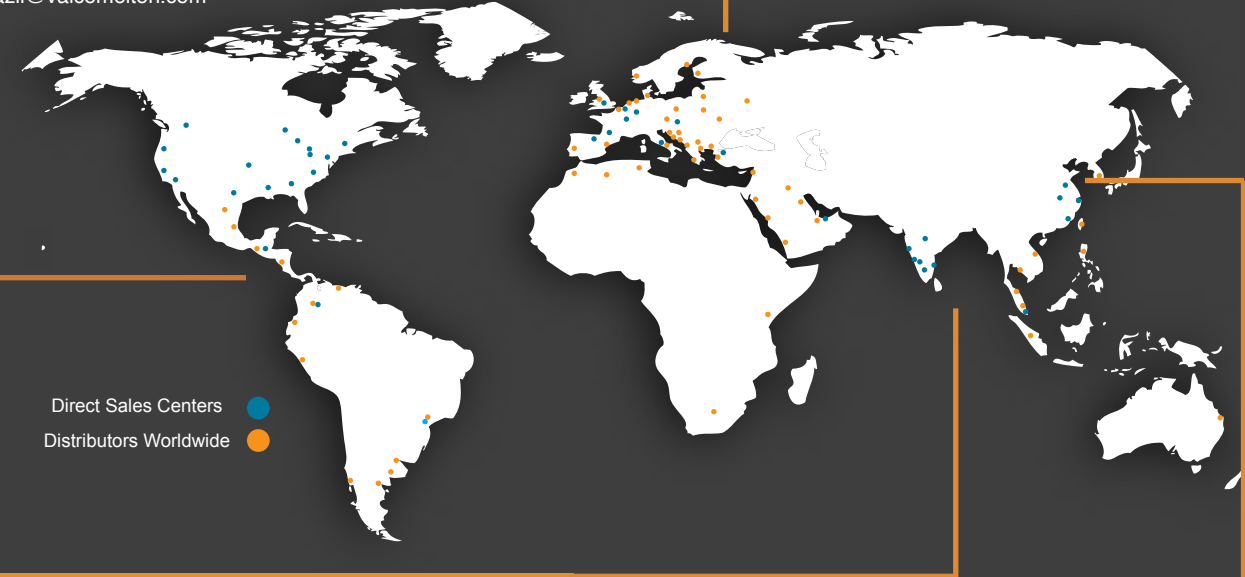
Canada, Vancouver, B.C.
ClearVision Technologies
Tel: +1.604.998.4012
canada@valcomelton.com

USA West Coast, CA, Petaluma
GMS-Vansco
Tel: +1.707.285.3392
inquiry@gmsvansco.com

Mexico, México D.F.
Tel: +52.55.6278.1727
mexico@valcomelton.com

Colombia, Bogotá
Tel: +57.313.421.0926
colombia@valcomelton.com

Brazil, Sao Paulo
Tel: +55.11.99919.3510
brazil@valcomelton.com



Direct Sales Centers ●
Distributors Worldwide ●

South, Southeast, West & Central Asia Manufacturing, Sales & Service Centers

Turkey, Istanbul | Tel: +90 212 327 99 71
turkey@valcomelton.com

India, Bangalore | Tel: +91.80.28378111
india@valcomelton.com

UAE, Sharjah | Tel: +971.521305960
uae@valcomelton.com

Singapore, Singapore | Tel: +65 850 95355
singapore@valcomelton.com

Europe Manufacturing, Sales & Service Centers

Spain, Navarra, Orcoyen | Tel: +34 948 321 580
spain@valcomelton.com

France, Valence | Tel: +33 (0) 4 75 78 13 73
france@valcomelton.com

Italy, Brescia | Tel: +39 030 2732544
italy@valcomelton.com

Italy, Brescia | ERO s.l.r | Tel: +39 030 2731503
info@ero-gluers.com

Benelux, The Netherlands | Tel: +31 252-673673
benelux@valcomelton.com

Hungary, Budapest | Tel: +36 1-214-4705
hungary@valcomelton.com

UK, England, Telford | Tel: +44 1952-677911
uk@valcomelton.com

Germany, Düsseldorf | Tel: +49.211 984 798-0
germany@valcomelton.com

Poland, Siechnice | Tel: +48 71 889 04 50
poland@valcomelton.com

East Asia Sales & Service Centers

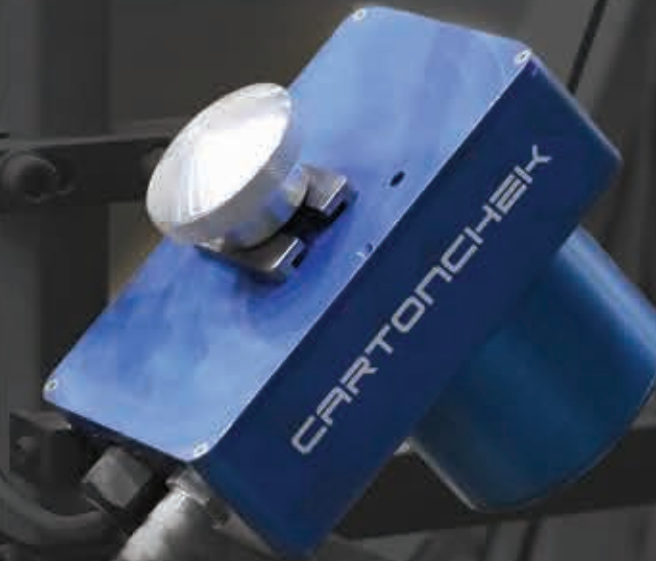
China, Shanghai | china@valcomelton.com
China, Xiamen | Tel: +86.592.591.7854
Fax: +86.592.591.7834 | china@valcomelton.com

To find the office nearest you, visit:
<http://bit.ly/2Cb8Fv2>
or snap a picture of this QR Code



BC-004

CLEARVISION THE PERFECT CARTON™



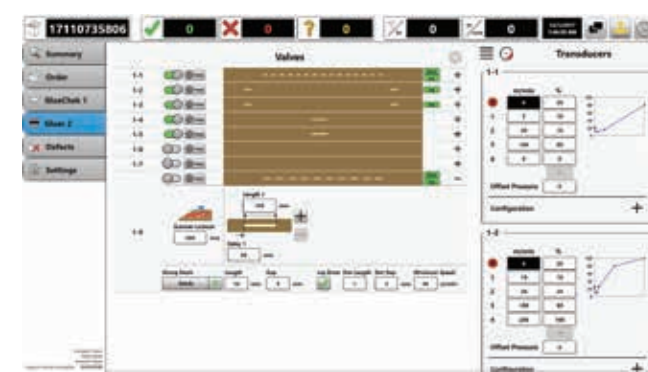
MAKING



CLEARVISION

THE PERFECT CARTON™

PATTERN CONTROLS



VCX Controller



MCP-4J Controller



MCP-8 Controller

Glue Control

Setup and adjust all gluing-related attributes from the CartonChek control interface. Also use existing MCP and VCX platforms and link those directly into CartonChek.

VALCO MELTON'S ECOSTITCH SOLUTION

The new MX EcoStitch solutions from Valco Melton out-performs traditional pneumatic hot melt valves in several ways:

- No shop air required
- Fewer consumable parts
- Reduced downtime
- Glue savings - **Better, precise glue patterns**



Valco Melton's EcoStitch Solution



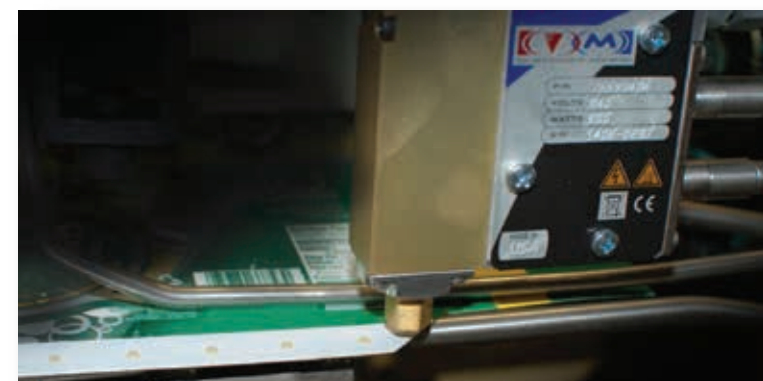
Traditional Pneumatic System

Valco Melton offers a host of integrated and stand-alone hot melt solutions for your carton production.



D10 Melter

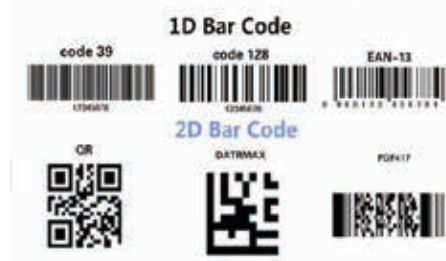
D4 Melter



CODECHEK

FEATURES

- Eliminate mixed copy issues
- Validate most 1D (Linear) and 2D (Matrix) barcodes
- Capture and record sequential and random barcodes including GS1 Datamatrix
- Speeds up to 65,000 cartons per hour
- Store variable data of serialized codes in database to ship with your order or future analysis



GLUECHEK

FEATURES

- Auto learn function
- Inspect all in-view areas including no glue zones
- Ensure glue is dispensed properly to the carton
- Checks:
 - Glue pattern
 - Glue volume
 - Extraneous glue splash or splatter
- Ensure folds and flaps are positioned correctly

LASERCHEK

FEATURES

- Laser line is projected onto carton and used to identify height changes.
- Height changes are inspected in order to recognize folds, flaps, and cut outs.
- Use LaserChek to check perforations, cut outs, tip-on (placement), die cuts or any point that requires a measurement or validation in-line.
- Real time reassurance that 4, 6, 12, and 24 pack carrier handles are punched or knocked out every time.
- Inspect fold presence and quality including double folds.



BRAILLECHEK

FEATURES

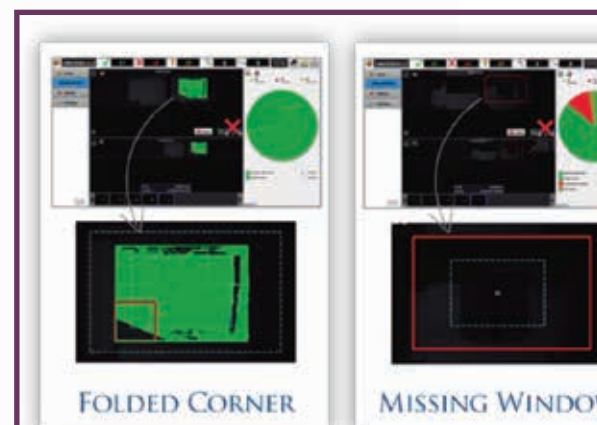
- Decodes braille into text for accuracy and validation
- Identifies missing or misshapen braille dots
- Camera reads printed side of carton to inspect the side of the braille that is read
- Identifies braille dots that are insufficiently formed
- Up to 6 lines of braille on a carton panel
- Speeds up to 65,000 cartons per hour



WINDOWCHEK

FEATURES

- Complete window inspection: height, width, position, contaminates, glue pattern & cello with slit are all measured or compared to Master Image
- Set and adjust multiple tolerances to detect various types of defects
- Eliminate potential hazards caused by improper packaging
- Increase customer satisfaction by consistently producing perfect windowed cartons
- Speeds up to 65,000 cartons per hour



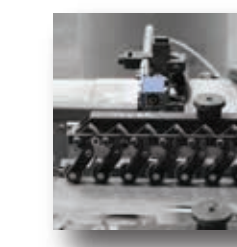
CAMERAS FOR EVERY JOB



NARROW GLUECHEK

FEATURES

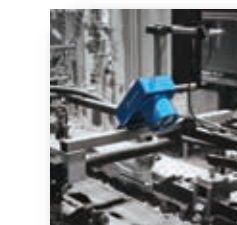
- Small footprint
- Simple to move and install
- Self calibrating
- Ideal for single glue line or DOT applications



MICRO CODECHEK

FEATURES

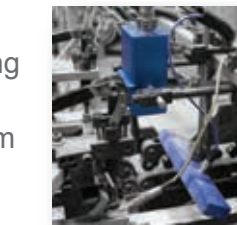
- Compact
- Built-in lighting
- Simple to move and install
- Ideal for barcode inspection



AREACHEK

FEATURES

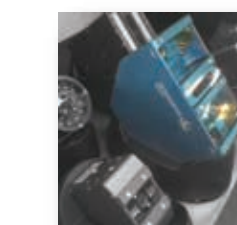
- Typically uses external lighting
- Best for permanent mount
- FOV: 40mm (1.57") to 100mm (3.94")
- Ideal for LaserChek



MEGA GLUECHEK

FEATURES

- Ideal for whole carton image
- Glue pattern, flaps, and fold confirmation
- Typically uses external lighting
- Best for permanent mount
- FOV: 60mm (2.36") to 700mm (27.56")



SHADOWCHEK

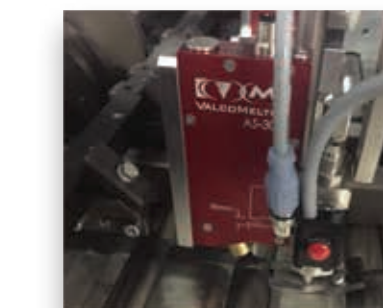
FEATURES

- Built-in lighting source
- Designed to create profile or shadow to define raised edges.
- Ideal for braille, glue patterns, tip-ons and more

SENSORS FOR EVERY JOB

AS-303 – Hot Melt and Cold Glue Single-Bead Detection

- Missing glue
- Incorrect placement
- Glue volume
- Glue dots in unglued areas
- No glue additives
- Scanner and sensor lockout for windows



CDS Color Code Reader

- Available as bottom-up reflex or pre-folder versions
- Mixed copy detection
- Print-to-print registration and print-to-cut registration detection
- Inspects R*G*B color density
- Inspection at speeds above 700 meters/min possible
- Live screen feedback

