

PACKCHEK

Hot Melt Inspection

Hot melt sensors have been around for decades, but tight space constraints on packaging machinery have made retrofitting them into existing machines extremely difficult. PackChek™ is installed at the discharge of your machine, eliminating these space constraints.

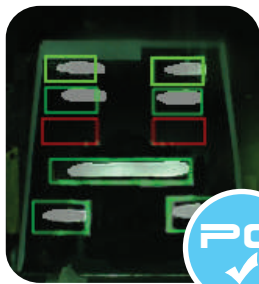
How it Works

PackChek™ is ClearVision's automated packaging inspection system that takes a thermal and visual image of every package to ensure that hot melt glue is applied in the correct location. Using the thermal image, PackChek™ finds the heat signature of each glue bead, verifies its position, and displays a user-friendly image.

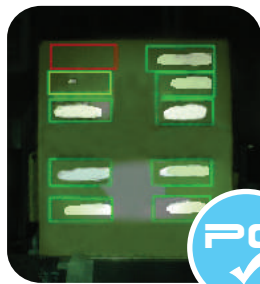


PackChek™ installed on a cartoning machine with a hot melt gluing system

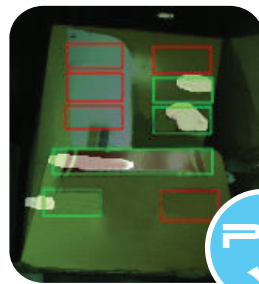
Defects found by the PackChek Hot Melt Inspection System



Missing glue beads



Weak glue beads



Crushed, torn or open flap



Misaligned glue beads