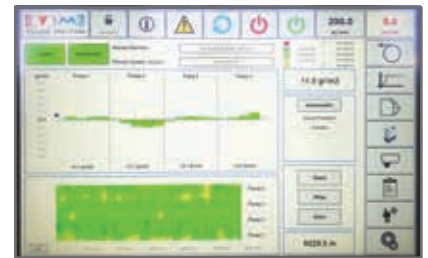


## AKURA PF APPLICATORS

### Hot melt coating applicators for controlled adhesive dosing

Akura PF applicators achieve homogeneous adhesive coatings on applications as wide as 3000 mm. This versatile series can be equipped with a variety of module, adhesive channel, and nozzle configuration options to accommodate virtually any adhesive coating process. Upgrade options include pressure transducers, grammage control in close-loop, flow meters and pumping stations.

- **Homogeneous adhesive distribution.** Based on each project requirements, Akura applicators feature a number of independent hydraulic zones. Each zone is fed by a gear pump, to ensure an even distribution of the adhesive across the full web width.
- **Precision adhesive dosing.** Akura applicators feature different flow regulator options, allowing the user to fine-tune the adhesive flow within each independent hydraulic zone.
- **Automatic adjustments.** By incorporating our Weight-Inspekt grammage control system, the average grammage of each hydraulic zone may be controlled in close-loop with the gear pumps. As deviations in the adhesive grammage are detected, the system will automatically adjust the adhesive flow for the specific hydraulic zone.

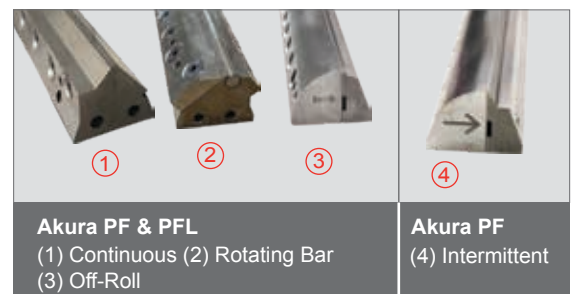


*Weight-Inspekt grammage control working in close-loop*

*Akura PF Applicators are available in widths up to 1100 mm and can work on intermittent applications.*



*Akura PFL applicators feature a robust design for applications up to 3000 mm.*



A quick-change nozzle fastening mechanism allows for simple changes from one nozzle type to another.



**Flow Regulation Options to Match Your Needs**

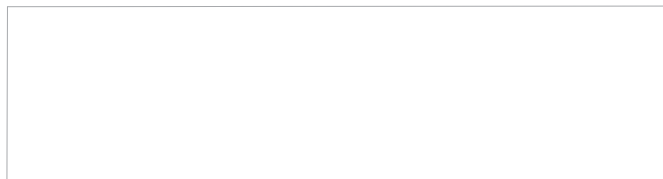
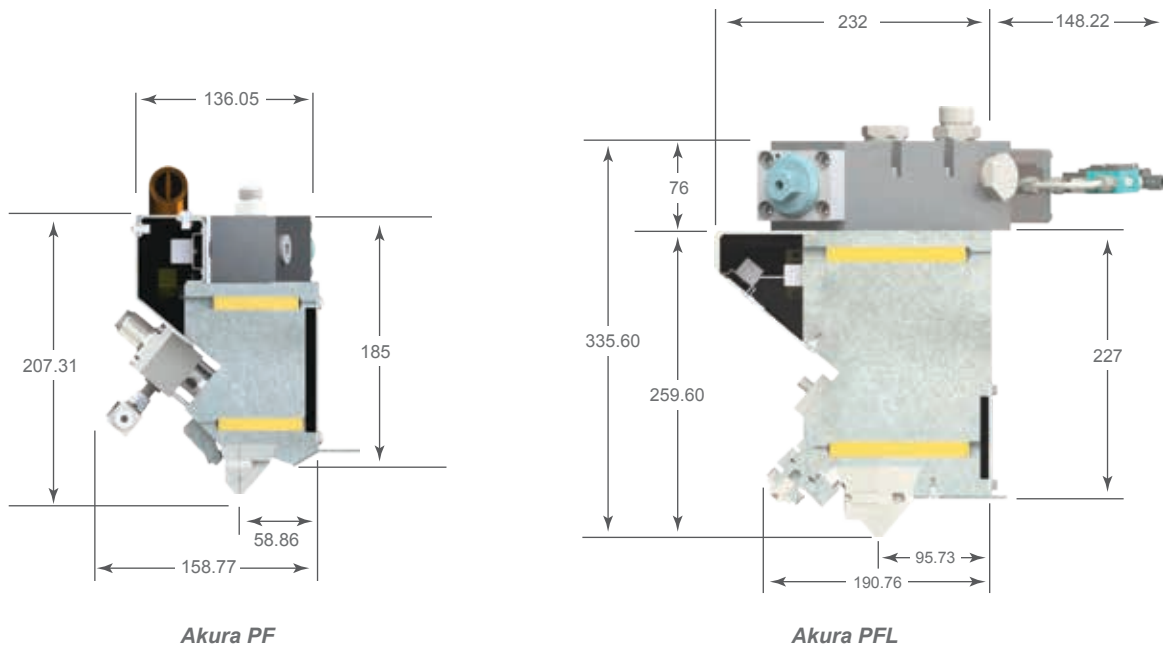
For high-speed applications, *MI Modules* guarantee a sharp cut-off. *MPH-RM Modules* feature a micro-regulation system, making them ideal for applications where high precision on the adhesive dosage is required.

In processes requiring a high adhesive flow or working with high viscosities, Akura applicators feature a specific flow regulation system.

**Technical Specifications**

Akura PF Series Applicators	
Nozzle Options	Akura PF & PFL: Continuous / Off-Roll / Rotating Bar. Akura PF only: Intermittent
Adhesive Input Options	Direct / Filter / Filter with Shut-off Valve
Temperature Control	NI-120 / PT-100 / FEKO
Max Coating Width	Up to 3000 mm
Max Operating Temperature	240° C (464° F)
Max Operating Pressure	100 bar
Operating Speed	500 m/min
Coating Thicknes Range*	10 - 200 gr/sqm
Max Electrical Consumption	Akura PF: 2500 W every 400mm / Akura PFL: 3500 W every 400mm

\*Coating thickness will vary depending on the nozzle and adhesive type



**For more information, visit [valcomelton.com](http://valcomelton.com) or contact your local Valco Melton representative.**

World Headquarters: USA, Cincinnati, Ohio (Corporate Offices) • Tel:+1.513.874.6550 • Fax: +1.513.874.3612

Europe Headquarters: Spain, Navarra • Tel:+34.948.321.580 • Fax:+34.948.326.584

Asia Headquarters: China, Xiamen, Fujian • Tel:+86.592.591.7854 • Fax:+86.592.591.7834

inquiry@valcomelton.com • Serving over 76 Countries Worldwide • valcomelton.com