



# WINDOWCHEK

## How it Works

Guarantee perfect windowed folding cartons using WindowChek™. Verify the existence of the plastic window as well as its correct position and condition. Identify defects including folded, torn and wrinkled windows. By comparing images under a variety of lighting conditions, WindowChek can also detect contaminants trapped between the carton stock and the window, such as carton scrap, dirt, and patch material, etc.

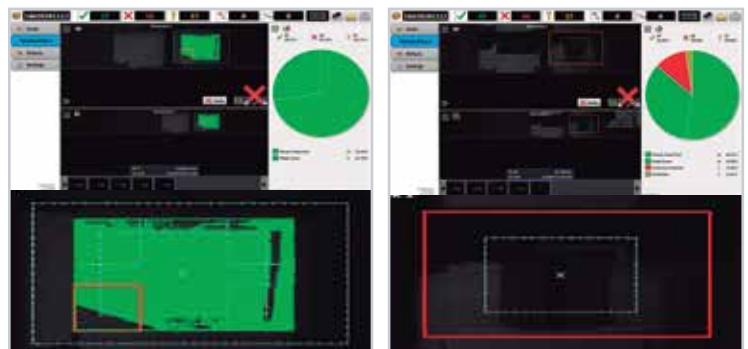
The clear nature of plastic windows makes them naturally difficult to detect using machine vision. WindowChek utilizes the reflective properties of plastic to identify defective product for rejection.



## Benefits

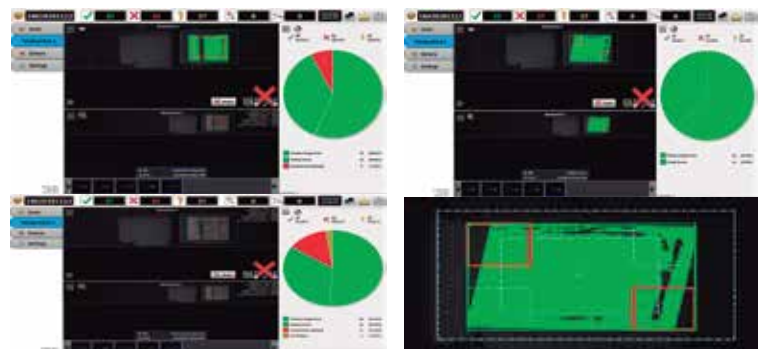
Folding carton manufacturers can expect the following benefits from using WindowChek:

- Observe and locate the window cover, regardless of the background
- Set and adjust multiple tolerances to detect various types of defects
- Eliminate potential hazards caused by improper packaging
- Increase customer satisfaction by consistently producing perfect window boxes
- Working speeds of 300m/min.



*Defect: Folded Corner*

*Defect: Missing Window*



*Defect: Contaminants*

*Defect: Rotated Window*



For more information, visit [valcomelton.com](http://valcomelton.com) or contact your local Valco Melton representative.

World Headquarters: Cincinnati, OH, USA (Corporate Offices) • Tel: +1.513.874.6550 • [info@valcomelton.com](mailto:info@valcomelton.com)

Europe Headquarters: Orkoien, Spain • Tel: +34.948.321.580

Asia Headquarters: Xiamen, Fujian, China • Tel: +86.592.591.7854

# THE PERFECT CARTON™

